

Concealed single-lever mixer with diverter - Brushed Champagne (22kt Gold)

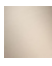







TARA

36 120 660

- automatic diverter
- cover plate Ø 150 mm

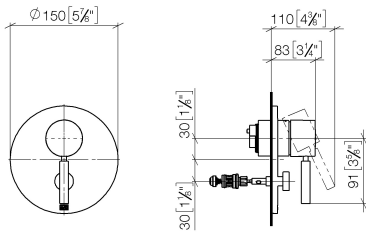


Fits: TARA, META

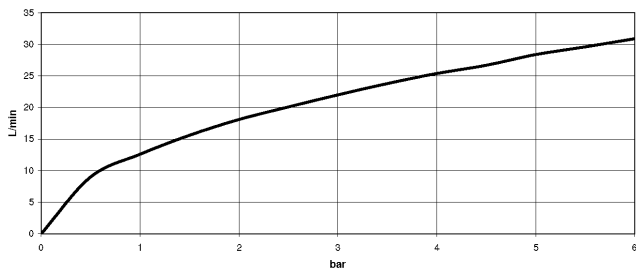
	Brushed Champagne (22kt Gold)	36 120 660-46
	Chrome	36 120 660-00
	Brushed Platinum	36 120 660-06
	Platinum	36 120 660-08
	Dark Chrome	36 120 660-19
	Light Gold	36 120 660-26
	Brushed Light Gold	36 120 660-27
	Brushed Durabrass (23kt Gold)	36 120 660-28
	Matte Black	36 120 660-33
	Brushed Bronze	36 120 660-42
	Champagne (22kt Gold)	36 120 660-47
	Brushed Chrome	36 120 660-93
	Brushed Dark Platinum	36 120 660-99

36 120 660

mm [inches]



Flow rate chart



Certificates

DVGW_DW-
6512DN0126.

LGA_19863.

WRAS_2207012.

36 120 660

Parts for other
finishes can be found
here: [Chrome](#)

